

Brose Motor Conversion Kit

part number: 80-04868-10

INSTALLATION GUIDE



INSTALLATION TIME

1 Hour

Professional installation recommended

SKILL LEVEL



4= Experienced

TOOLS REQUIRED

- ☐ 5/32 Hex (Allen) key
- ☐ 7/16 box wrench or socket
- ☐ Hammer
- ☐ Wire cutter
- ☐ Wire Stripper
- ☐ Wire Crimpers
- ☐ Electrical tape
- ☐ Drill
- ☐ 1/4" Drill bit
- ☐ Torque Wrench
- ☐ 5mm Hex (Allen) Key

WARRANTY

1-Year Limited Warranty

Brose Motor Conversion Kit contents:

- | | |
|----------------------------------|-----|
| - Brose motor | x 1 |
| - Delta PT Screw, PT50 x 35, T25 | x 3 |
| - Brose motor housing | x 1 |
| - Brose motor cover | x 1 |
| - Socket Cap screw | x 3 |
| - Pigtail | x 1 |
| - Driving Wedge | x 1 |
| - Hex Cap Screw 1/4 - 20 X 3/4 | x 1 |

Designed and manufactured by RealTruck AMP Research® • Made in Mexico
 Patent Protected. Please see our product site for applicable patents. www.realtruck.com/b/amp-research/
 © RealTruck Group, Inc., 2024 • One-year limited warranty. • Professional installation is recommended.

Motor conversion kit compatible with the following part numbers:

• 10-75101-01A	• 10-76235-01A	• 10-77152-01A	• 10-78242-01A
• 10-75104-01A	• 10-76236-01A	• 10-77152-01T	• 10-78254-01A
• 10-75105-01A	• 10-76239-01A	• 10-77154-01A	• 10-78338-01A
• 10-75111-01A	• 10-76240-01A	• 10-77158-01A	• 10-78364-01A
• 10-75113-01A	• 10-76242-01A	• 10-77168-01A	• 10-86139-01A
• 10-75114-01A	• 10-76243-01A	• 10-77235-01A	• 10-86147-01A
• 10-75115-01A	• 10-76252-01A	• 10-77235-01T	• 10-86151-01A
• 10-75118-01A	• 10-76254-01A	• 10-77236-01A	• 10-86152-01A
• 10-75123-01A	• 10-76259-01A	• 10-77236-01T	• 10-86154-01A
• 10-75126-01A	• 10-76260-01A	• 10-77238-01A	• 10-86235-01A
• 10-75134-01A	• 10-76263-01A	• 10-77240-01A	• 10-86236-01A
• 10-75138-01A-B	• 10-76264-01A	• 10-77240-01T	• 10-86239-01A
• 10-75141-01A	• 10-76327-01A	• 10-77242-01A	• 10-86240-01A
• 10-75146-01A	• 10-76332-01A	• 10-77242-01T	• 10-86242-01A
• 10-75154-01A-B	• 10-76336-01A	• 10-77244-01A	• 10-86254-01A
• 10-75156-01A	• 10-76338-01A	• 10-77248-01A	• 10-86338-01A
• 10-75157-01A	• 10-76339-01A	• 10-77254-01A	• 10-86341-01A
• 10-75158-01A	• 10-76341-01A	• 10-77254-01T	• 10-96139-01A
• 10-75159-01A	• 10-76364-01A	• 10-77254-02T	• 10-96152-01A
• 10-75163-01A	• 10-76365-01A	• 10-77338-01A	• 10-96235-01A
• 10-76134-01A	• 10-77104-01A	• 10-77362-01A	• 10-96239-01A
• 10-76138-01A	• 10-77105-01A	• 10-77364-01A	• 10-96240-01A
• 10-76139-01A	• 10-77106-01A	• 10-78139-01A	• 10-96242-01A
• 10-76141-01A	• 10-77126-01A	• 10-78151-01A	• 10-96338-01A
• 10-76147-01A	• 10-77134-01A	• 10-78152-01A	• 10-96255-01A
• 10-76151-01A	• 10-77138-01A	• 10-78154-01A	• 10-96364-01A
• 10-76152-01A	• 10-77141-01A	• 10-78234-01A	
• 10-76154-01A	• 10-77148-01A	• 10-78235-01A	
• 10-76159-01A	• 10-77151-01A	• 10-78236-01A	
• 10-76160-01A	• 10-77151-01B	• 10-78239-01A	
• 10-76234-01A	• 10-77151-01T	• 10-78240-01A	

Removing old motor Instructions:

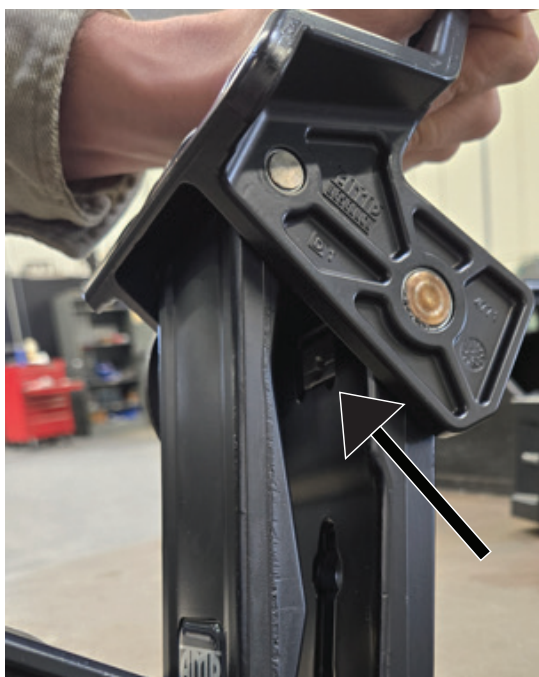
Unplug motor from harness. Using a 5/32" Hex (Allen) key, remove the three socket head cap screws, then detach the motor from the linkage.

**1**

Remove the plastic gear cover from the housing.

**2**

Locate the wedge inside the linkage arm. It will need to be removed in the following steps.

**3**

Using a 7/16" box wrench or socket, loosen (but do not fully remove) the hex head bolt.

**4**

Removing old motor Instructions continue:

Leave the hex head bolt approximately $\frac{3}{4}$ of the way removed, then gently tap the head of the bolt with a hammer to release the wedge.

**5**

Once the wedge is free from the shaft, completely remove the bolt and wedge from the linkage.

**6**

Pull drive shaft to remove from the linkage.

**7**

Using a 5mm Hex (Allen) key, remove the three bolts securing the gear housing to the linkage, and then remove the gear housing.

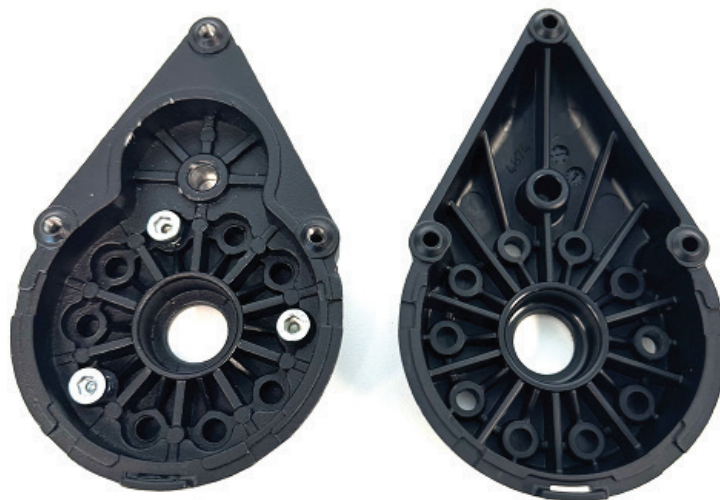
**8**

Motor Kit Installation:

Use the existing motor housing to identify the required hole locations on the new housing.

Note: Your housing may have a different bolt pattern based on your application.

Drill out the holes on the new gear cover housing using a 1/4" drill bit.

**9**

Attach the new housing to the linkage using the supplied M6 bolts (3x) with a 5mm Hex (Allen) key. Torque the bolts to 60 in-lbs.

Do not over-torque.

**10**

Insert the drive shaft into the gear cover housing, ensuring the shaft properly engages with the outer link.

**11**

Motor Kit Installation continue:

Reinstall the wedge onto the drive shaft. You may need to rotate the drive shaft to align the flat part of the shaft with the corresponding location of the wedge. Once positioned, insert and tighten the bolt using a 7/16" box wrench or socket. Torque the bolt to 120 in-lbs. **Do not over-torque.**

**12**

Secure the new gear cover onto the housing.

**13**

Insert the new motor into the housing. Using the supplied PT screws and a Torx T25 tool, tighten the screws. Torque to 36 in-lbs.

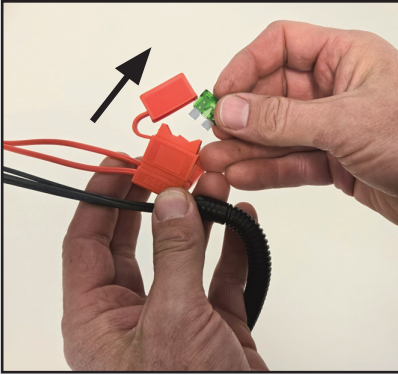
Do not over-torque.

**14**

Pig Tail Install to harness:

IMPORTANT - Remove fuse from wire harness.

Cut the existing motor plug off the wire harness using wire cutters.

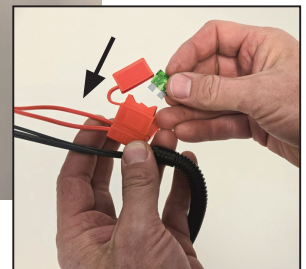
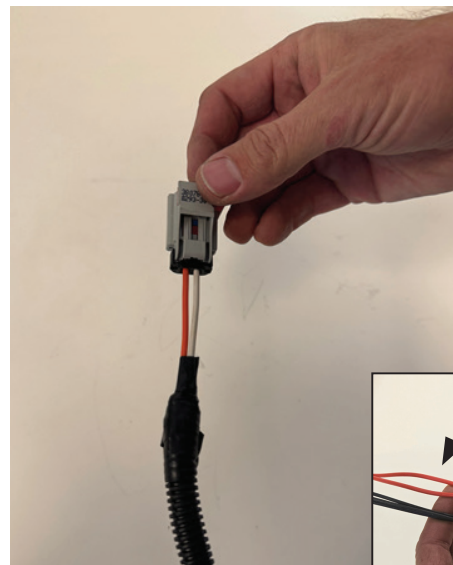
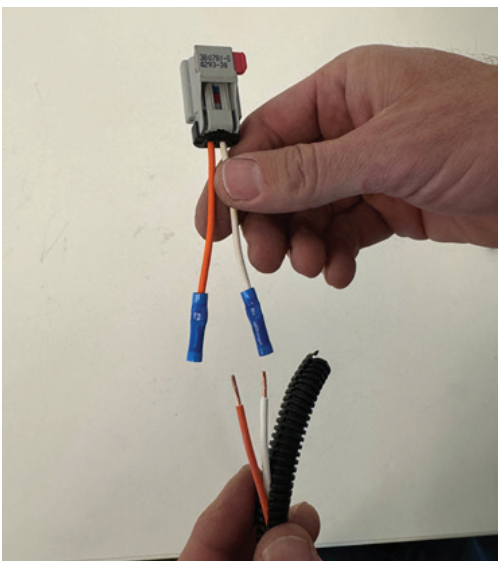


15

Strip & insert the wires from the wire harness into the pigtail end. **NOTE: We recommend installing the plug to the motor then open and close the door to verify correct operation of the powerstep before crimping.** Once verified crimp ends.

Insert the wires back into the plastic wire loom, then use electrical tape to seal wrap it up. Reinstall plug into the motor.

Reinstall fuse back in to the wire harness.



16

17



AMERICAN DESIGNED & ENGINEERED

Thank you for your recent RealTruck purchase.

REGISTER YOUR PRODUCT TODAY FOR FASTER SERVICE & PRODUCT UPDATES

Please visit:

<https://realtruck.com/warranty-registration/>
or scan the QR Code



Product Registration Benefits:

- Ensure we have your purchase receipt and product info in our system which is required for warranty.
- Faster and easier access to customer service and tech support in the unlikely event you need warranty or product support.
- Registration helps us keep you up to date on product information and offers.

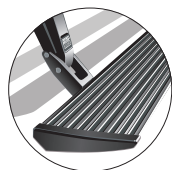
To view other RealTruck products that may be offered for your vehicle.

Please visit: www.realtruck.com

Rev 05.30.24

Congratulations on your purchase of the genuine RealTruck / AMP Research PowerStep! Here's what you should know...

POWER-DEPLOYABLE RUNNING BOARDS OPERATION: RealTruck / AMP Research PowerStep running boards automatically move when the doors are opened to assist entering and exiting the vehicle.



Automatic power deploy:

The running boards will extend down and out when the doors are opened.

Automatic power stow:

The running boards will return to the stowed position when the doors are closed. There will be a 2-second delay before the running boards move to the stowed position.

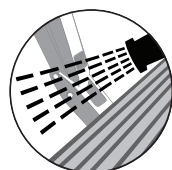
Automatic stop:

If an object is in the way of the moving running board, the running board will automatically stop. To reset, clear any obstruction, then simply open and close the door to resume normal operation.



Manually set in the deployed (OUT) position for access to the roof:

The running boards can be manually set in the deployed position by firmly holding the step down with your foot while at the same time closing the door. To resume normal operation, open and close the door.



Maintenance: In adverse conditions, debris such as mud, dirt, and salt may become trapped in the running board mechanism, possibly leading to unwanted noise. If this occurs, manually set the running boards to the deployed position and flush the front and rear hinge arms with a high-pressure car wash wand. Avoid spraying the motors directly. After washing, apply silicone spray lubricant to the hinge pivot pins. Do not apply silicone, wax or protectants like Armor All® to the running board stepping surface.

Caution! Keep hands away when the running board is in motion.

5-YEAR LIMITED WARRANTY

RealTruck / AMP RESEARCH warrants this product to be free from defects in material and workmanship for FIVE (5) YEARS FROM DATE OF PURCHASE, provided there has been normal use and proper maintenance. This warranty applies to the original purchaser only. All remedies under this warranty are limited to the repair replacement of the product itself, or the repair or replacement of any component part thereof, found by the factory to be defective within the time period specified. The decision to repair or replace is wholly within the discretion of the manufacturer.

This warranty specifically excludes labor. If you have a warranty claim, first you must call our factory at the number below for instructions. You must retain proof of purchase and submit a copy with any items returned for warranty work. Upon completion of warranty work, if any, we will return the repaired or replaced item or items to you freight prepaid. Damage to our products caused by accidents, fire, vandalism, negligence, misinstallation, misuse, acts by nature or by defective parts not manufactured by us, is not covered under this warranty.

ANY IMPLIED WARRANTIES OF MERCHANTABILITY AND/OR FITNESS FOR A PARTICULAR PURPOSE CREATED HEREBY ARE LIMITED IN DURATION TO THE SAME DURATION AND SCOPE AS THE EXPRESS WRITTEN WARRANTY. OUR COMPANY SHALL NOT BE LIABLE FOR ANY INCIDENTAL OR CONSEQUENTIAL DAMAGE.

Some states do not allow limitations on how long an implied warranty lasts, or the exclusion or limitation of incidental or consequential damages, so the above limitations or exclusions may not apply to you. This warranty gives you specific legal rights, and you may also have other rights that vary from state to state.

FOR WARRANTY ISSUES WITH THIS PRODUCT PLEASE CALL REALTRUCK TECH SUPPORT 1-888-983-2204

WARNING

Be sure to read and precisely follow the provided instructions when installing this product. Failure to do so could place the vehicle occupants in a potentially dangerous situation. After installing or reinstalling, re-check to insure that the product is properly installed.